



Driving directions to AMC Gardens NG2 2HZ, from South

From London Rd/A60 cross Trent Bridge then bear left onto Arkwright St

Take the 1st left onto Bathley St

Turn right onto Wilford Crescent East

Take the 2nd right onto Wilford Grove

Take the 1st right onto Kirkby Gardens
AMC Gardens are on the right past the Children's Centre – red gates in blue fence. Park on the street.



Walking directions to AMC Gardens from Nottingham Midland Station


Leaving the main station entrance turn left.

Walk down Carrington Street and bear right down Sheriff's Way on the side of the road next to the Vat and Fiddle. Cross over Waterway Street using the pedestrian crossing to continue down Sheriff's Way.

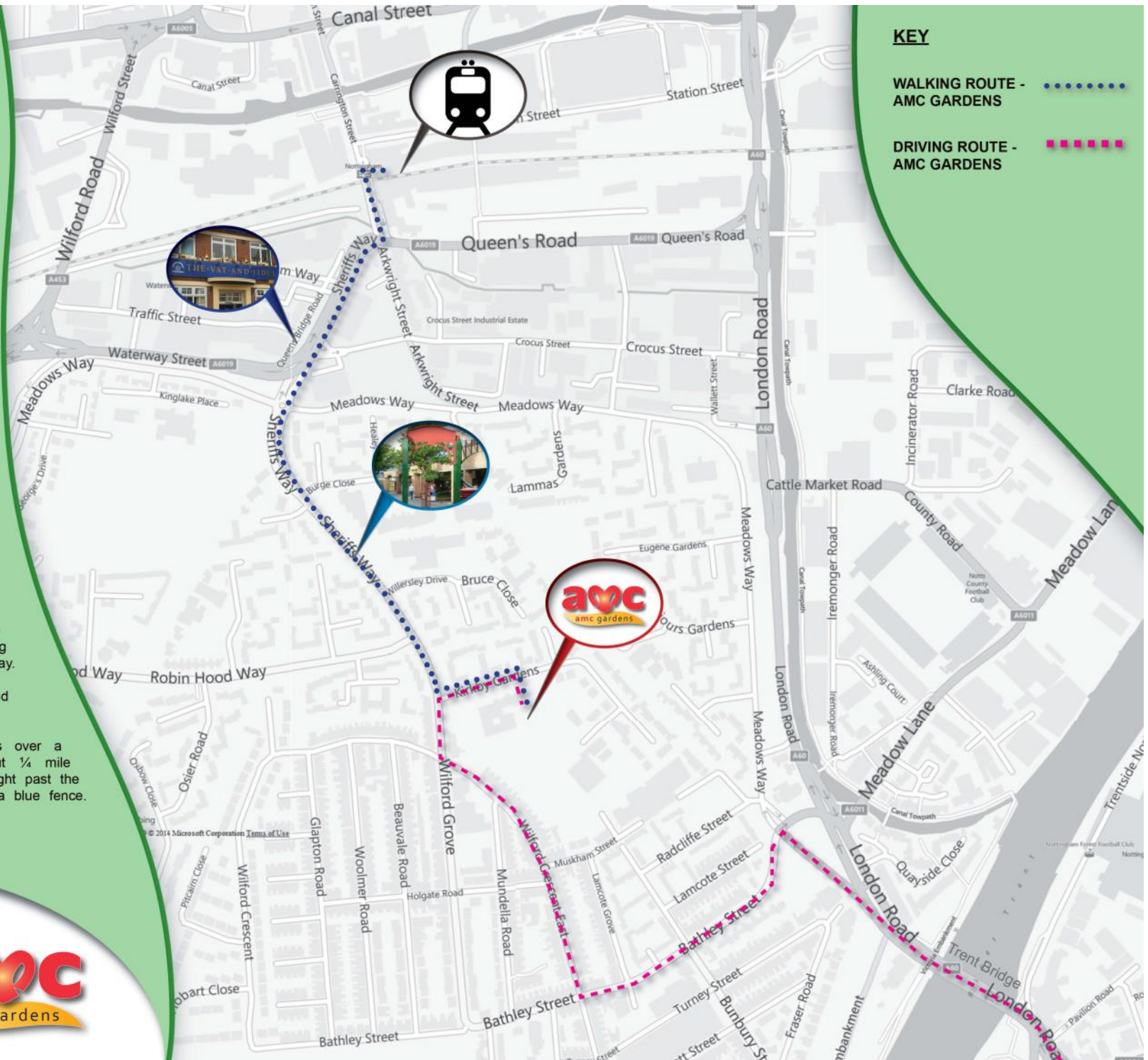
Cross over Meadows Way at the mini-roundabout and continue straight onto Sheriff's Way.

Sheriff's Way bends to the left and crosses over a pedestrian walkway. Kirkby Gardens is about ¼ mile along on the left. AMC Gardens are on the right past the Children's Centre – look for the red gates in a blue fence.

KEY

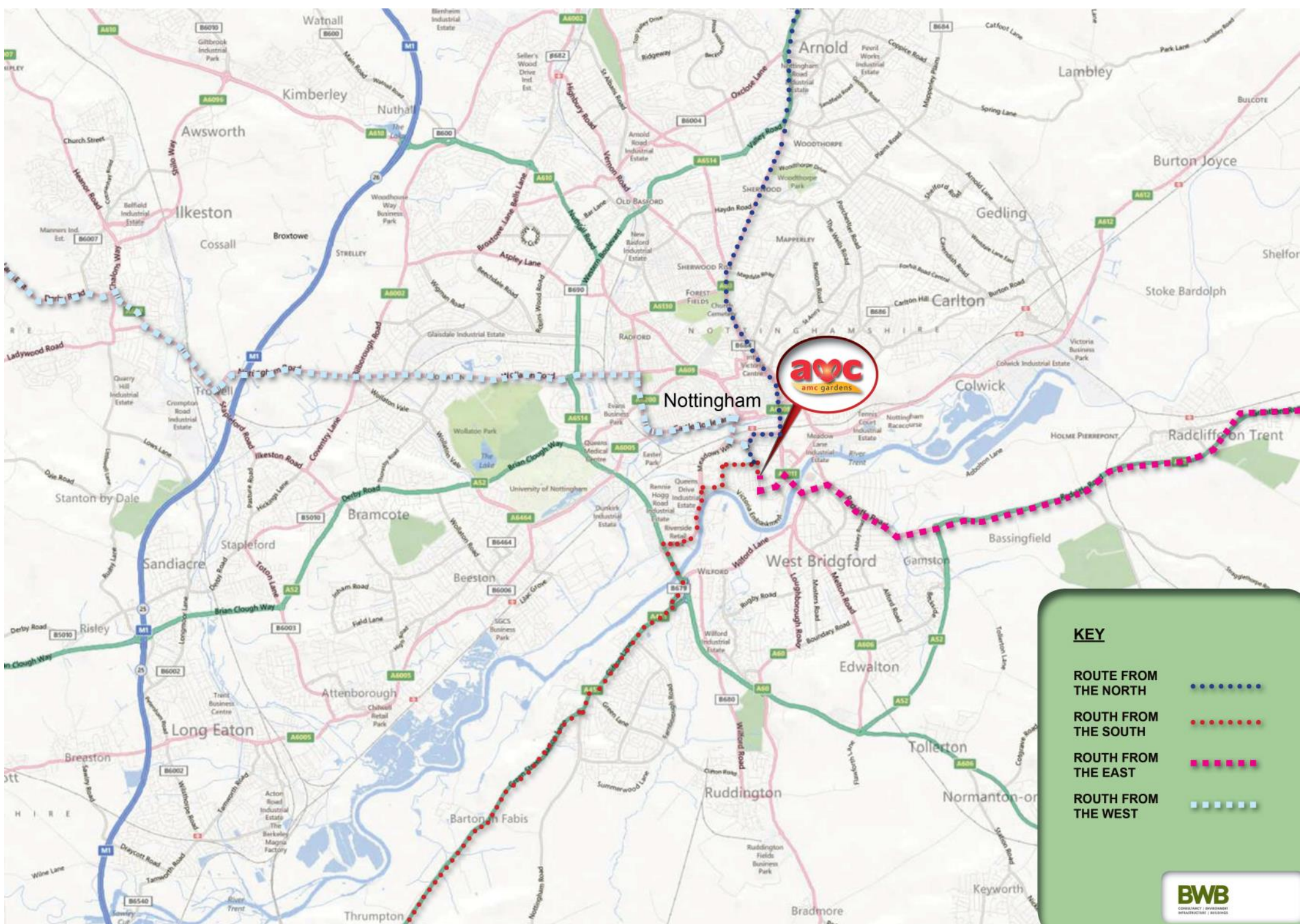
WALKING ROUTE - AMC GARDENS 

DRIVING ROUTE - AMC GARDENS 



Kindly produced by





KEY

- ROUTE FROM THE NORTH ●●●●●
- ROUTE FROM THE SOUTH ●●●●●
- ROUTE FROM THE EAST ■ ■ ■ ■ ■
- ROUTE FROM THE WEST ■ ■ ■ ■ ■